

1111 ATWATER

3002

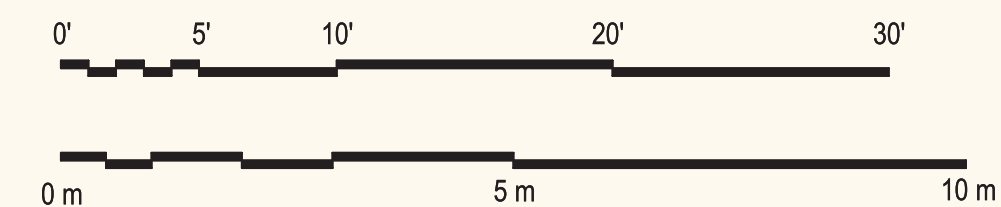
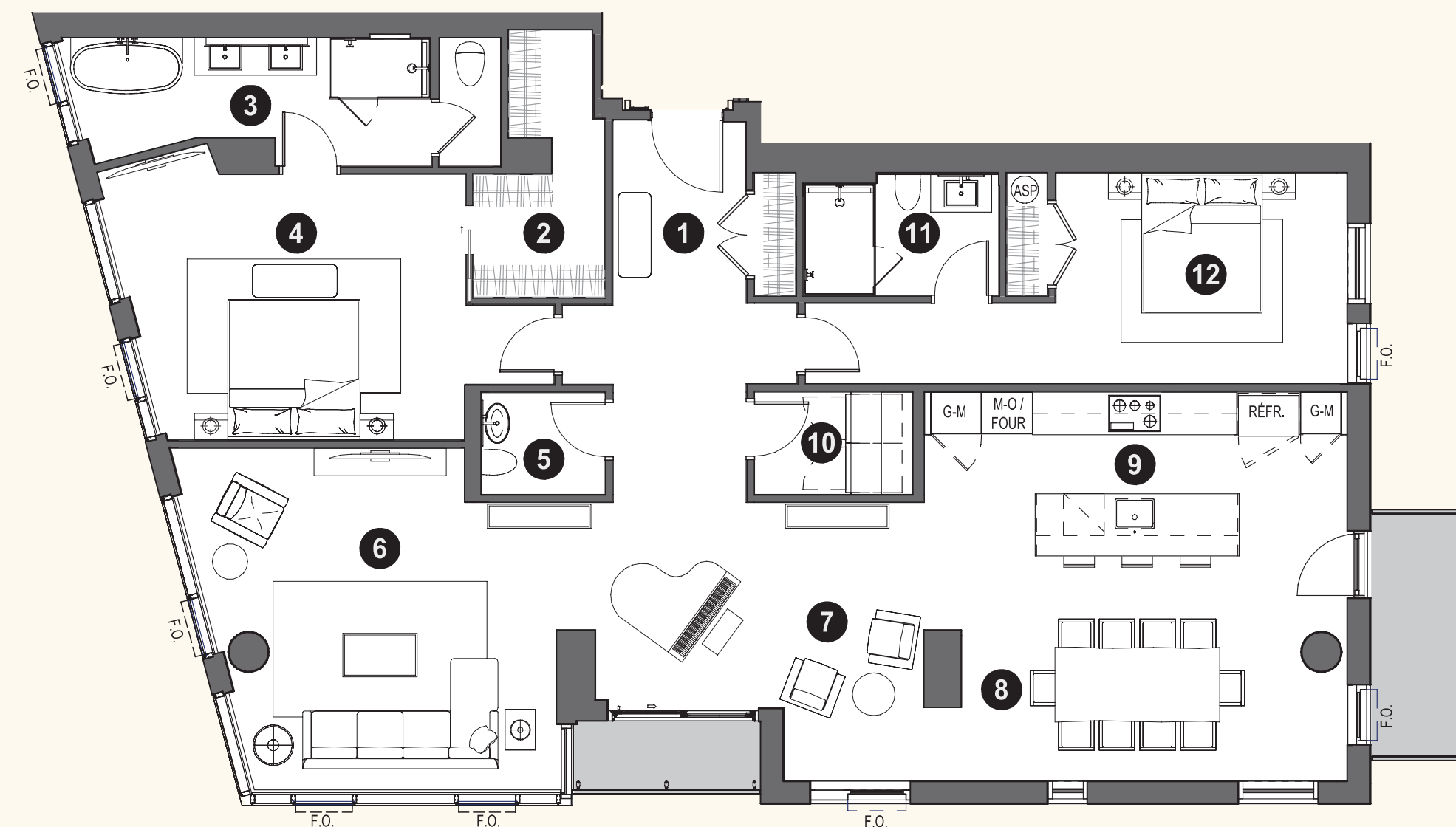
2 chambres / rooms
2 salles de bains / bathrooms
1 salle d'eau / powder room

2 042 pi² / sq.ft.

1 balcon / balcony
64 pi² / sq.ft.

1 loggia / loggia
38 pi² / sq.ft.

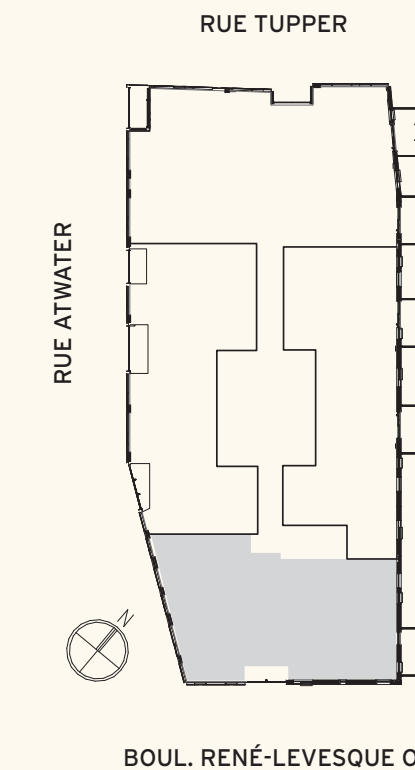
Niveau / level 30



- 1 VESTIBULE
9'-2" x 6'-6"
- 2 WALK-IN
13'-1" x 6'-5"
- 3 SALLE DE BAIN (MÂÎTRES) / BATHROOM (MASTERS)
5'-0" x 21'-3"
- 4 CHAMBRE DES MÂÎTRES / MASTERS' BEDROOM
13'-4" x 17'-0"
- 5 SALLE D'EAU / POWDER ROOM
5'-0" x 6'-1"
- 6 SALON / LIVING ROOM
17'-0" x 17'-8"
- 7 SÉJOUR
13'-8" x 16'-1"
- 8 SALLE À MANGER / DINING ROOM
10'-0" x 18'-11"
- 9 CUISINE / KITCHEN
9'-1" x 20'-7"
- 10 SALLE DE LAVAGE / LAUNDRY ROOM
5'-0" x 8'-1"
- 11 SALLE DE BAIN 2 / BATHROOM 2
5'-6" x 9'-7"
- 12 CHAMBRE 2 / ROOM 2
10'-4" x 14'-4"

Toutes les dimensions et superficies indiquées sur les plans sont approximatives et sujettes à modifications sans préavis.

All dimensions and areas indicated on the plans are approximate and subject to modification without notice.



LÉGENDE / LEGEND

G-M
GARDE-MANGER / PANTRYREFR
RÉFRIGÉRATEUR / FRIDGEM-O
FOUR MICRO-ONDE ET FOUR /
MICROWAVE OVENASP
ASPIRATEUR / VACCUM