

1111 ATWATER

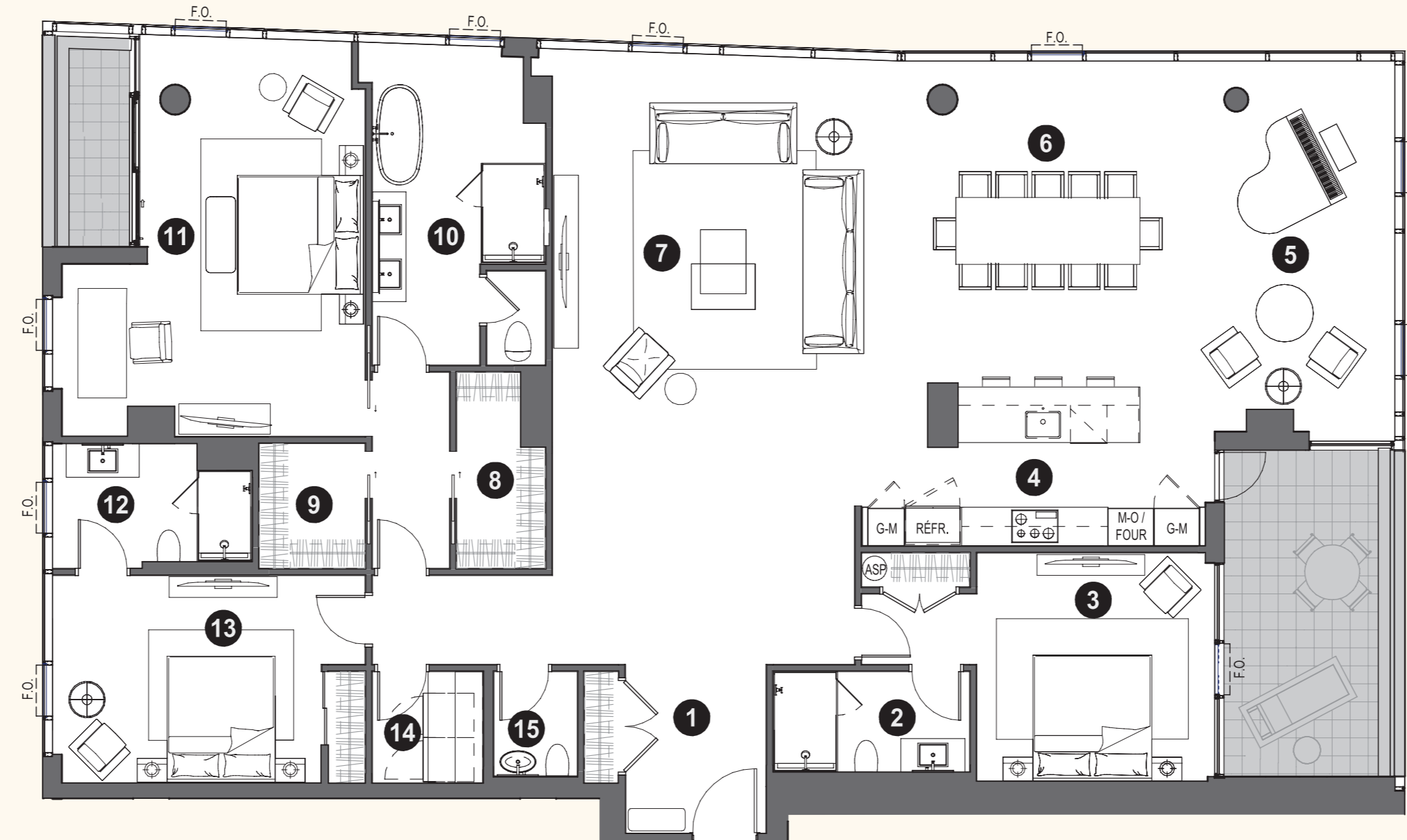
3504

3 chambres / rooms
 3 salles de bains / bathrooms
 1 salle d'eau / powder room

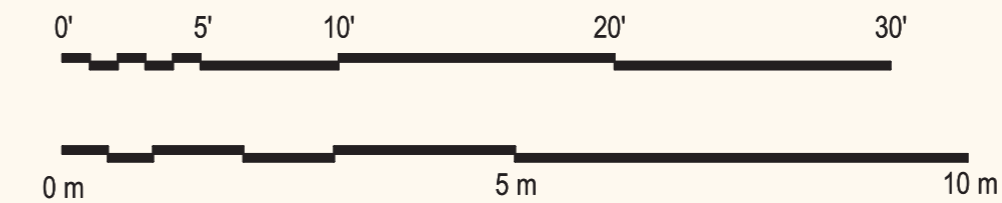
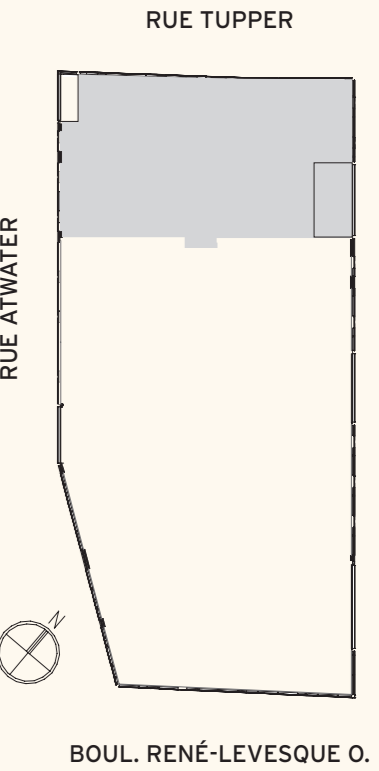
2 832 pi² / sq.ft.

2 loggias / loggias
 58 pi² / sq.ft. 177 pi² / sq.ft.

Niveau / level 35



- 1 VESTIBULE
9'-3" x 8'
- 2 SALLE DE BAIN 2 / BATHROOM 2
5'-6" x 10'-9"
- 3 CHAMBRE 2 / ROOM 2
12'-6" x 13'
- 4 CUISINE / KITCHEN
11'-4" x 19'-3"
- 5 SÉJOUR / LOUNGE
20'-9" x 11'-9"
- 6 SALLE À MANGER / DINING ROOM
24'-8" x 18'-10"
- 7 SALON / LIVING ROOM
24'-8" x 18'-10"
- 8 WALK-IN 1
10'-8" x 4'-10"
- 9 WALK-IN 2
6'-10" x 5'-9"
- 10 SALLE DE BAIN (MAÎTRES) / BATHROOM (MASTERS)
11'-6" x 9'-5"
- 11 CHAMBRE DES MAÎTRES / MASTERS' BEDROOM
21'-9" x 12'-5"
- 12 SALLE DE BAIN 3 / BATHROOM 3
6'-5" x 10'-11"
- 13 CHAMBRE 3 / ROOM 3
11'-4" x 14'-8"
- 14 SALLE DE LAVAGE / LAUNDRY ROOM
6'-1" x 6'
- 15 SALLE D'EAU / POWDER ROOM
6'-8" x 4'-3"



Toutes les dimensions et superficies indiquées sur les plans sont approximatives et sujettes à modifications sans préavis.
 All dimensions and areas indicated on the plans are approximate and subject to modification without notice.

LÉGENDE / LEGEND	
G-M	GARDE-MANGER / PANTRY
REFR	RÉFRIGÉRATEUR / FRIDGE
M-O	FOUR MICRO-ONDE ET FOUR / MICROWAVE OVEN
ASP	ASPIRATEUR / VACCUM